

Q.5 Develop the line plan as shown in Fig. Q.5.1 (a), according to the construction notes given below :

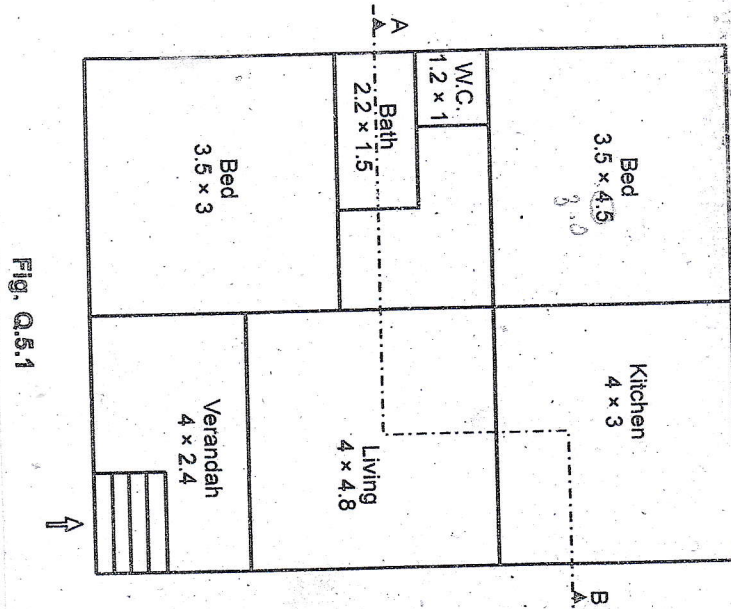


Fig. Q.5.1

- Detailed plan
- Front elevation
- Sectional elevation
- Calculate plinth area

Notes :

- Depth of foundation below G.L. = 1 m
- Plinth height = 600 mm.
- Floor to floor ht. = 3000 mm.
- Slab thickness = 100 mm.
- PCC in foundation = 150 mm
- Internal walls of WC and Bath = 200 mm thick.
- Mosaic tile flooring over a bed of PCC 1 : 3 : 6, 110 mm thick and 200 mm thick rubble soling below.
- Assume suitable data.
- Partition walls of WC and Bath = 200 mm thick.
- Brick wall in super structure 300 mm thick.
- UCR in cm 1 : 6 for foundation and plinth wall.

Sample Answers

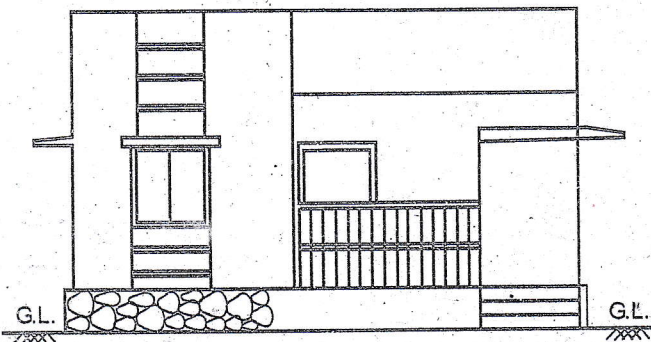


Fig. Q.5.1 (b) Front elevation

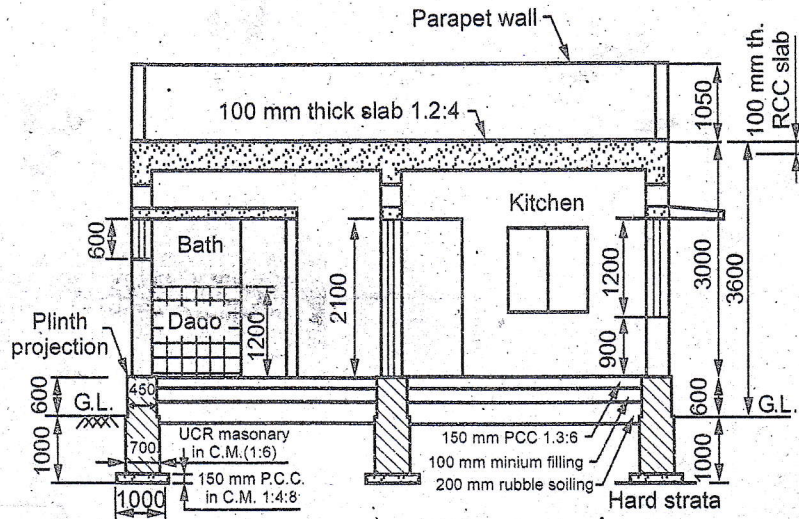


Fig. Q.5.1 (c) Sectional elevation A - B

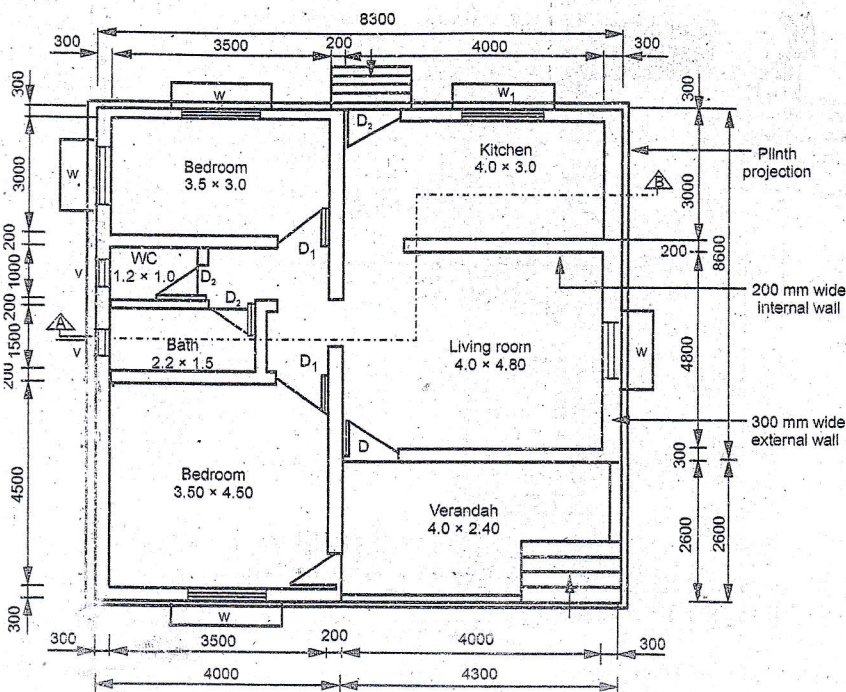


Fig. Q.5.1 (a) Detailed plan